



OSAKA KYOIKU  
UNIVERSITY

# at a Glance

---

2023



## 【 Outline 】

Osaka Kyoiku University (OKU), which was founded in May 1874 as a teacher training school, has over 140 years history and tradition. The current number of undergraduate and graduate students totals approximately 4700, with another 4800 students matriculated in affiliated schools. Among Japanese universities, OKU is a one of the leading producers of qualified teachers and a leading large-scale college of education.

The main campus of OKU was established in the Kongo Ikoma Kisen National Park, in Kashiwara City, Osaka. This campus is approximately 670,000 square meters in area. In addition, OKU also has a campus in Tennoji.

In April 2017, OKU introduced a newly established department, Department of Educational Collaboration, which nurtures human resources specialized in the field of education/learning support as well as reorganizing Courses for School Teachers. The new department aims to educate creative personnel capable of leading the development of school education and its related fields.

In April 2019, OKU had a major expansion of the United Graduate School of Professional Teacher Education in cooperation with Kansai University and Kindai University, and reorganized its Graduate School of Education (Masters Course) into 1 major 3 courses in April 2021.

The university's programs are designed to meet the high educational standards of a comprehensive teacher training university, which in the case of OKU is made up 11 affiliated schools and 7 educational centers.

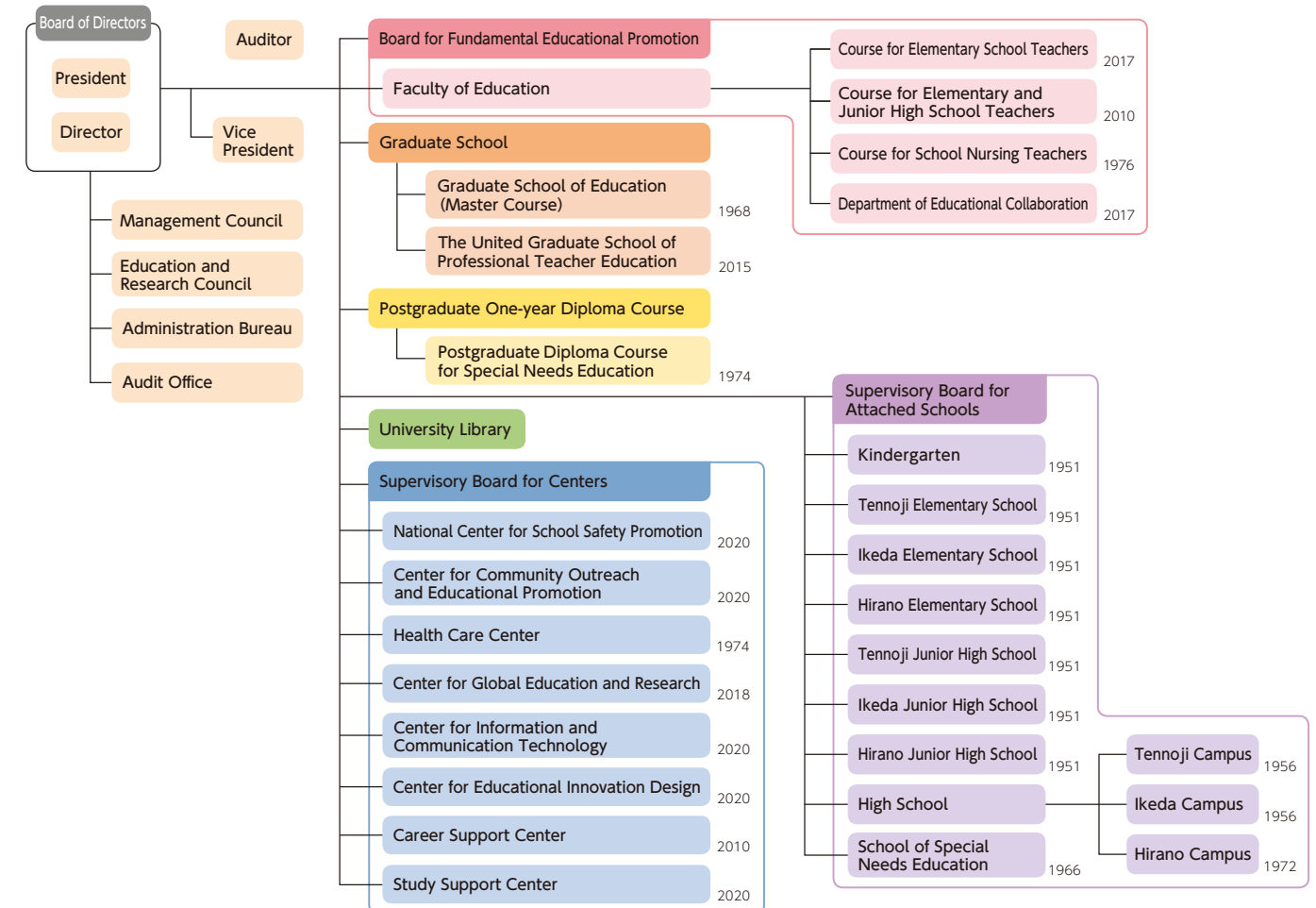
## 【 Contents 】

Outline .....	2
Organization / Number of Personnel .....	3
Number of Students .....	4 - 6
Career Path for Students / University Library .....	7
International Exchange .....	8 - 9
Budget / Land and Building / External Grants .....	10
Affiliated Schools .....	11
Campus Map .....	12 - 13
Center Introduction .....	14
Access Map .....	15



## Organization

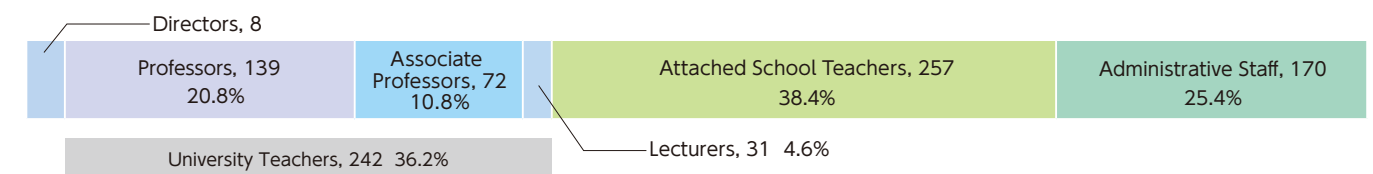
Year of establishment appears on the right



## Number of Personnel

Total number of the personnel : 669(Directors are not included.)

(May 1, 2023)





# Number of Students

(May 1, 2023)

Course				Fixed Number for Admission	Capacity	Number of Students Currently Enrolled
Faculty of Education	Course for Elementary School Teachers	Early Childhood Education	————	15	60	69(1)
		Elementary School Education	Daytime Course	45	180	184
			Evening Course(5years)	40	200	202
			Evening Course(Transfer*1)	25	75	78
	Course for Elementary and Junior High School Teachers	Special Needs Education	————	420	1,680	192(3)
		Primary and Secondary Education	School Education Course			110
			Japanese Language Education Course			175
			English Education Course			67(1)
			Social Studies Education Course			150
			Mathematices Education Course			102
			Science Education Course			152(1)
			Home Economics Education Course			41
			Health and Physical Education Course			124
			Music Education Course			41
			Art and Calligraphy Education Course			68
		Secondary Education	Japanese Language Education Course			41
			English Education Course			67
			Social Studies Education Course			48(1)
			Mathematices Education Course			99
			Science Education Course			108
			Technology Education Course			40
			Home Economics Education Course			38
			Health and Physical Education Course			45
			Music Education Course			41
			Art and Calligraphy Education Course			45
		Number of Enrollment Prior to 2016				—
	Course for School Nursing Teachers			30	120	125
Course for Special Needs Education Teachers*2			—	—	2	
Course for Elementary School Teachers (5years)*2			—	—	3	
Total			575	2,315	2,462(7)	

The numbers in parentheses represent international students.

\*1 Accepting from FY2019

\*2 From FY2017 hiring freeze

(May 1, 2023)

Course				Fixed Number for Admission	Capacity	Number of Students Currently Enrolled
Faculty of Education	Department of Educational Collaboration	Educational Psychology Sciences	————	350	1,400	163(34)
		Health and Safety Sciences	————			142(12)
		Science,Mathematics and Information	Mathematics and Information Course			171(27)
			Natural Sciences Course			244(9)
		Global Education	English Communication Course			116(2)
			Multicultural Literacy Course			211(80)
		Music and Fine Arts	Music Course			168
			Fine Art Course			42(1)
		Sports Sciences	————			216(3)
	Department of Arts and Sciences*	Human Sciences	————	—	—	1
		Culture	————			1
		Mathemativai Sciences	————			1
		Natural Sciences	————			2
		Infomation Sciences	————			2
		Music and Fine Arts	————			1
	Total			350	1,400	1,481(168)

The numbers in parentheses represent international students.

\* From FY2017 hiring freeze



## Number of Students

(May 1, 2023)

	Course	Fixed Number for Admission	Capacity	Number of Students Currently Enrolled
Graduate School of Education	Music and Fine Arts Studies*	—	—	3
	Health Sciences (Evening Course)*	—	—	5
	School of Advanced Professional Collaboration in Education	50	100	106(28)
The United Graduate School of Professional Teacher Education	School of Advanced Professional Development in Education	150	300	216(2)
Total		200	400	330(31)
Postgraduate Diploma Course for Special Needs Education		30	30	30

The numbers in parentheses represent international students.  
\* From FY2021 hiring freeze



## Career Path for Students

(FY2022)

Occupation	Courses for Elementary and Junior High School Teachers・Course for School Nursing Teachers		Department of Educational Collaboration		Course for Elementary School Teachers		Elementary School Education Evening Course(5years)		Graduate School of Education		The United Graduate School of Professional Teacher Education	
	Number	%	Number	%	Number	%	Number	%	Number	%	Number	%
Teachers	287	66.0%	51	15.0%	83	72.2%	33	60.0%	4	7.5%	109	91.6%
Private Companies	72	16.6%	160	47.1%	17	14.8%	12	21.8%	35	66%	7	5.9%
Public Services	24	5.5%	42	12.4%	3	2.6%	2	3.6%	3	5.7%	2	1.7%
Higher Education	40	9.2%	71	20.9%	11	9.6%	8	14.5%	3	5.7%	1	0.8%
Others	12	2.8%	16	4.7%	1	0.9%	0	0%	8	15.1%	0	0%
Total	435	100%	340	100%	115	100%	55	100%	53	100%	119	100%

Percentages are rounded to the nearest whole number and may not total 100.



## University Library

Number of Books

Number of Visitors

Total Circulations

(FY2022)

	Books	Periodicals (Japanese)	Periodicals (Foreign Languages)	Audio Visual Materials	Students	Academic and Non-academic staff	Others	Students	Academic and Non-academic staff	Others
Main Library	863,141	14,213	3,310	14,424	95,077	4,003	1,628	26,227	4,248	1,413
Branch	84,122	1,135	110	582	9,299	847	3,390	3,815	1,170	931
Total	947,263	15,348	3,420	15,006	104,376	4,850	5,018	30,042	5,418	2,344

3,807 e-journals / 30,221 e-books / 7 databases



# International Exchange

Number of International Students

(May 1, 2023)

Year	Number of Countries and Areas	Number of Students
2018	23	176
2019	18	178
2020	25	202
2021	10	209
2022	20	228
2023	24	253

Number of OKU Students Studying Abroad at a Partner University

(May 1, 2023)

Region	Country / Area	University	Number of Students
Asia	Korea	Ewha Womans University	2
		Seoul National University of Education	1
	Taiwan	National Taiwan Normal University	1
	Vietnam	Hanoi University	1
Europe	Switzerland	Zurich University of Teacher Education	2
	Germany	Friedrichi-Alexander-University Erlangen-Nuremberg	1
	Finland	Abo Akademi University	1
North America	U.S.A	Western Carolina University	1
		University of North Carolina Wilmington	1
Total			11

Number of International Students by Country and Area

(May 1, 2023)

Region	Country / Area	Number of Students
Asia	China	175
	Vietnam	25
	Korea	15
	Taiwan	12
	Indonesia	1
	Malaysia	1
	Thailand	1
	Pakistan	1
Africa	Malawi	2
	Zimbabwe	1
	Uganda	1

Region	Country / Area	Number of Students
Europe	Germany	2
	Croatia	1
	Italy	1
	Kazakhstan	1
	Kyrgyz Republic	2
	Lithuania	1
	Poland	1
	Russia	1
	U.S.A	3
	Mexico	1
North America	El Salvador	1
South America	Brazil	2
	Chile	1
Total		253

List of Educational Institutions under Academic Exchange Agreements

(May 1, 2023)

Region	Country / Area	Name of University	Date of Concluding of the Agreement	Student Exchange	Academic Exchange
Asia	Indonesia	Institut Seni Indonesia Yogyakarta	September 21,2011		○
	Singapore	National Institute of Education, Nanyang Technological University	July 01,2014		○
	Thailand	Office of the Basic Education Commission, Ministry of Education	January 30,2019		○
		Chandrasekhar Rajabhat University	April 28, 2023	○	○
	Korea	Kongju National University	March 08,2011	○	○
		Cheongju National University of Education	October 22,2010	○	○
		Sungshin Women's University	July 04,2018		○
		Jeonju National University of Education	October 22,2010	○	○
		Seoul National University of Education	July 20,2005	○	○
		Daegu National University of Education	October 25,2017	○	○
		Daegu Haany University	May 24,2006	○	○
		Chungnam National University	March 21,2013	○	○
		Busan National University of Education	June 15,2011	○	○
		Ewha Womans University	February 16,2001	○	○

Region	Country / Area	Name of University	Date of Concluding of the Agreement	Student Exchange	Academic Exchange
Asia	Taiwan	National Dong Hwa University	May 15,2018		○
		National Taichung University of Education	April 22,2010	○	○
		National Taipei University of Education	February 21,2008	○	○
		University of Taipei	December 26,2022	○	○
		National Taiwan Normal University	May 21,2010	○	○
		National Kaohsiung Normal University	April 20,2010	○	○
		National Pingtung University	June 04,2015		○
			March 17,2022	○	
		Weifang Education Bureau	February 28,2019		○
		Yunnan University	March 18,2008		○
	China	Yunnan Normal University	July 20,2006		○
		East China Normal Education	April 13,2006		○
		Hebei Normal University	December 13,2005	○	○
		Shandong University of Arts	September 07,2020	○	○
		Xi'an Institute of Technology	October 31,2007		○
		National Institute of Education Sciences	November 19,2015		○
		Tianjin University	July 18,2018	○	○
		Tongji University	March 08,2002	○	○
		Northeast Normal University	July 16,1996	○	○
		Beijing Normal University	July 17,1996		○
		The Education University of Hong Kong	October 30,2008	○	○
	Vietnam	Hanoi University	January 10,2014	○	○
		Hanoi National University of Education	August 14,2020	○	○
		Ho Chi Minh City University of Education	February 26,2014	○	○
Europe	U.K	University of Chester	November 15,2004		○
	Kazakhstan	Abai Kazakh National Pedagogical University	September 01,2019		○
	Kyrgyz	Bishkek Humanities University	November 12,2015	○	○
	Croatia	Faculty of Humanities and Social Sciences University of Zagreb	March 18,2022	○	○
	Switzerland	University of Geneva	May 16,2017	○	○
		Zurich University of Teacher Education	April 01,2019	○	○
	Sweden	Linnaeus University	December 29,2001	○	○
		Friedrichi-Alexander-University Erlangen-Nuremberg	June 01,2001	○	○
			September 01,2013	○	○
	Germany	Faculty of Linguistic, Literary and Media Studies, University of Trier	March 12,2013	○	○
		The Faculty of Education of the Universität Leipzig	August 30,2010	○	○
	Finland	Abo Akademi University	August 30,2010	○	○
Oceania	Australia	Jean Moulin-Lyon 3 University	June 01,2004	○	○
		Institute of Continuing & TESOL Education, The University of Queensland (ICTE-UQ)	February 17,2015		○
		Griffith University	November 05,2002	○	○
Middle East	Afghanistan	Teacher Training Department,Ministry of Education	November 01,2006		○
		Martyr Professor Burhanudin Rabani Education and Training University	November 01,2006		○
North America	U.S.A	The University of Arizona	June 25,2018		○
		Western Carolina University	October 19,2020	○	○
		University of North Carolina Wilmington	October 07,2020	○	○
		Valencia College*	June 14,2013		○
	Canada	University of Victoria	February 06,2013		○

\*Valencia College: tripartite partnership with National Federation of University Co-operative Associations (University Co-op).



## Income and Disbursement / Land and Building / External Grants

### Income and Disbursement in FY2022

#### Income

Classification	Amount of Money
Subsidies for Operating Expenses	5,944
Subsidies for Supplies and Equipment	134
Subsidies	236
Subsidy from National Institution for Academic Degrees and Quality Enhancement of Higher Education	14
Tuition and Examination Fees	2,466
Withdrawal of Income from Asset Disposal	361
Miscellaneous Income	95
Cooperative Research and Contributions	540
Reversal of Reserve for Purpose	364
<b>Total</b>	<b>10,154</b>

(unit: million yen)

#### Disbursement

Classification	Amount of Money
Education and Research Expenses	8,761
Supplies and Equipment Expenses	148
Subsidies	45
Business Expenses of Cooperative Research and Contributions	293
<b>Total</b>	<b>9,246</b>

(unit: million yen)

### Grants from Outside the University

Classification	FY2020		FY2021		FY2022	
	Number of Acceptance	Amount of Money	Number of Acceptance	Amount of Money	Number of Acceptance	Amount of Money
Endowments	614	220,458	241	190,946	305	218,847
Requested Research Grant by Private Sector	2	1,650	4	3,100	1	130
Join Research Grant	5	60,674	10	36,926	13	41,238
Requested Projects Grant	10	25,897	11	21,397	9	17,278
Grant-in-Aid for Scientific Research	191	138,049	215	127,488	216	113,650
<b>Total</b>	<b>822</b>	<b>446,728</b>	<b>481</b>	<b>379,857</b>	<b>544</b>	<b>391,143</b>

(unit: thousand yen)

### Land and Building

(May 1, 2023)

Campus Bureau	Land(m <sup>2</sup> )	Building(m <sup>2</sup> )
Kashiwara Campus	666,053	79,660
Tennoji Campus	49,648	17,640
Affiliated School Campus (Total)	160,623	66,271
Mountain Lodge	5,652	387
Others	14,020	7,918
<b>Total</b>	<b>895,996</b>	<b>171,876</b>



## Affiliated Schools

Osaka Kyoiku University reformed the governance system and set up Supervisory Board as an organization to combine between the university and its attached schools in 2020. Nine attached schools including three elementary schools, three junior high schools, a multi-campus senior high school located in three different areas, a school of special needs education and a kindergarten are supervised by this board.

This board works on strengthening cooperation between the university and its attached schools as well as promoting their secure management, guidance, education, researches and school safety. Our attached schools make outstanding contributions to educational researches of the university and provide undergraduate students with the practicum teaching

experience. They also conduct their joint research in each area. They cooperate with each other and are closely connected through higher grade schools accepting students from lower grade schools.

< Tennoji area >

Literacy education to harmonize human being and science

< Ikeda area >

Fostering learners' competency to create a global society collaboratively

< Hirano area >

Consistent education among different grade level schools from life-long developmental viewpoint



### — Tennoji area —

#### Tennoji Elementary School

1-2-45 Matsuzakicho, Abeno, Osaka 545-0053, Japan  
tel: +81-(0)6-6621-0123

Current Enrollment Number 628

Number of Classes 18

Capacity 630

#### Tennoji Junior High School

4-88 Minami Kawahoricho, Tennoji, Osaka 543-0054, Japan  
tel: +81-(0)6-6775-6052

Current Enrollment Number 432

Number of Classes 12

Capacity 432

#### High School Tennoji Campus

4-88 Minami Kawahoricho, Tennoji, Osaka 543-0054, Japan  
tel: +81-(0)6-6775-6053

Current Enrollment Number 453

Number of Classes 12

Capacity 480



### — Ikeda area —

#### Ikeda Elementary School

1-5-1 Midorigaoka, Ikeda, Osaka 563-0026, Japan  
tel: +81-(0)72-761-3591

Current Enrollment Number 599

Number of Classes 18

Capacity 630

#### Ikeda Junior High School

1-5-1 Midorigaoka, Ikeda, Osaka 563-0026, Japan  
tel: +81-(0)72-761-8690

Current Enrollment Number 434

Number of Classes 12

Capacity 432

#### High School Ikeda Campus

1-5-1 Midorigaoka, Ikeda, Osaka 563-0026, Japan  
tel: +81-(0)72-761-8473

Current Enrollment Number 465

Number of Classes 12

Capacity 480



### — Hirano area —

#### Kindergarten

2-1-79 Nagaremach, Hirano, Osaka 547-0032, Japan  
tel: +81-(0)6-6709-9400

Current Enrollment Number 144

Number of Classes 6

Capacity 150

#### Hirano Elementary School

1-6-41 Nagaremach, Hirano, Osaka 547-0032, Japan  
tel: +81-(0)6-6709-1230

Current Enrollment Number 627

Number of Classes 18

Capacity 630

#### Hirano Junior High School

2-1-24 Nagaremach, Hirano, Osaka 547-0032, Japan  
tel: +81-(0)6-6709-9600

Current Enrollment Number 323

Number of Classes 9

Capacity 324

#### High School Hirano Campus

2-1-24 Nagaremach, Hirano, Osaka 547-0032, Japan  
tel: +81-(0)6-6707-5800

Current Enrollment Number 355

Number of Classes 9

Capacity 360

#### School of Special Needs Education

4-8-71 Kire, Hirano, Osaka 547-0027, Japan  
tel: +81-(0)6-6708-2580

Current Enrollment Number 57

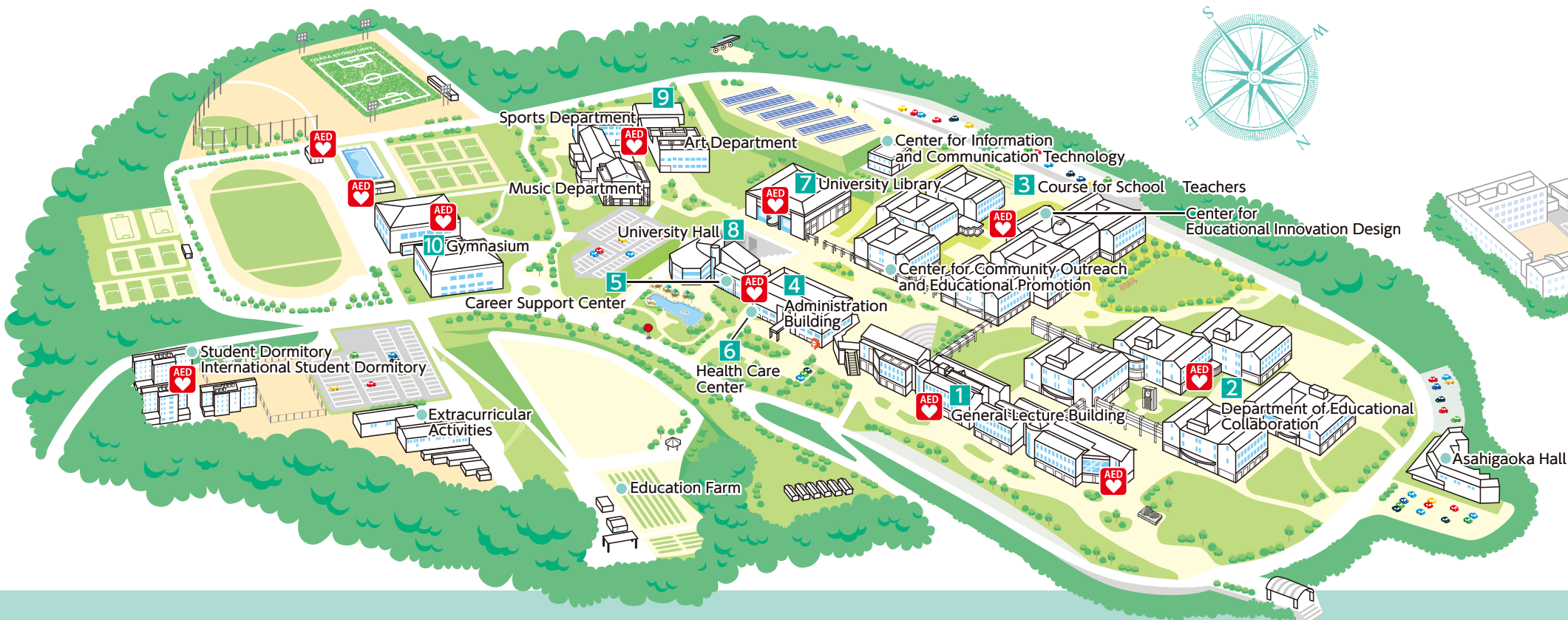
Number of Classes 9

Capacity 60

(May 1, 2023)



# Kashiwara Campus



1 General Lecture Building



2 Department of Educational Collaboration



3 Course for School Teachers



4 Administration Building



5 Career Support Center



6 Health Care Center



7 University Library



8 University Hall



9 Art・Music・Sports Department



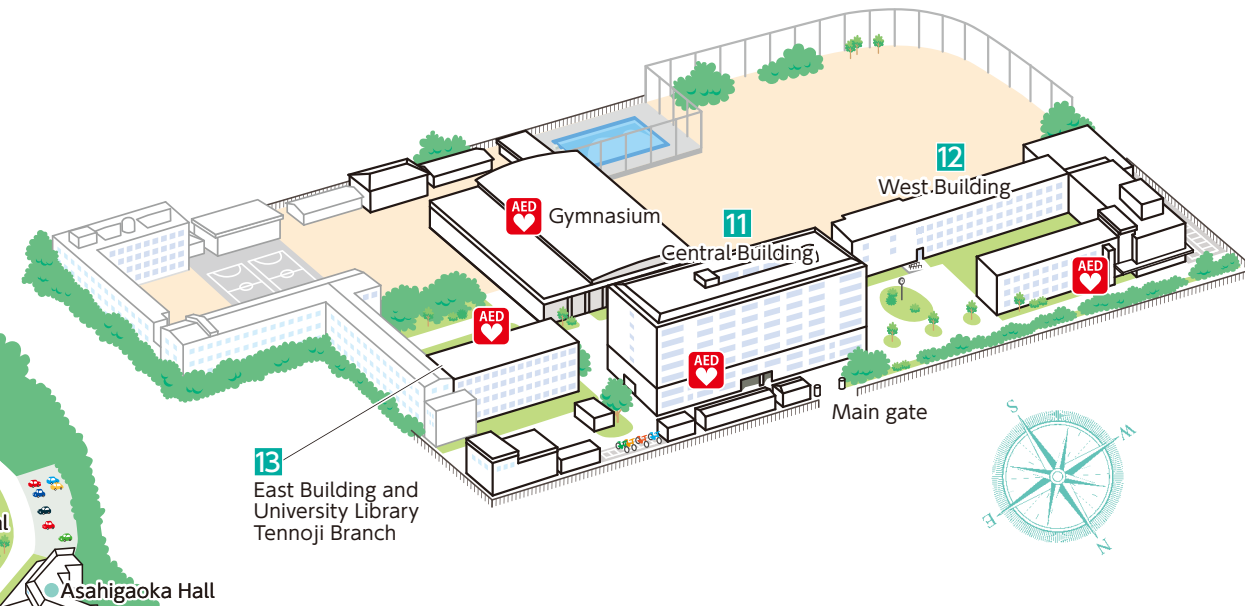
10 Gymnasium



## Other Facilities

Center for Information and Communication Technology / Center for Community Outreach and Educational Promotion  
Center for Educational Innovation Design / Center for Global Education and Research / Study Support Center  
Student Dormitory / International Student Dormitory / Extracurricular Activities / Education Farm / Asahigaoka Hall

# Tennoji Campus



11 Central Building



12 West Building



13 East Building and University Library Tennoji Branch





## Center Introduction



### National Center for School Safety Promotion

23 pupils and teachers were murdered or injured on June 8, 2001 in Ikeda Elementary School attached to Osaka Kyoiku University. Long term treatment has therefore been vital for emotionally damaged pupils, their parents, and teachers.

The center supports special methods to handle crisis in schools like the case above, carries out research on risk management in schools, and it is accessible to all researchers in this field.



### Center for Community Outreach and Educational Promotion

With the awareness of global issues, the center attempts to establish a borderless relationship between the university and the region. Research is conducted here on school education today and lifelong learning issues in the community, and helps to enrich and develop the teacher training and in-service training. Principles of social justice, human rights, collective responsibility and respect for diversities are central to our work.



### Health Care Center

Health Care Center provides various health-related information. The center places special emphasis on offering assistance that enhances the student's as well as faculty's health.



### Center for Global Education and Research

While the center provides services with the objectives of expanding teacher education by cooperating with other educational/research institutes both domestic and overseas, it also aims to advance human resource development, meeting a demand of globalized society.



### Center for Information and Communication Technology

The objective of the Center for Information and Communication Technology is to contribute to the development of educational research by promoting the computerization and smoothly operating the information system as the on-campus common-use facility.



### Center for Educational Innovation Design

Its aim is to research, develop, and practice a new, unprecedented, future-oriented education based on science and technology with ICT towards Society 5.0 through collaborations with institutions both within and outside the university on School Education to Higher Education.



### Career Support Center

The objective of the Career Support Center is to support Osaka Kyoiku University students to build their career paths, choose professions, and to plan their course after graduation. The Career Support Center in collaboration with the academic advisor, gives advice and support suited for each students' aptitude and their plan after graduation.



### Study Support Center

We provide consultation to students, offer study support for students with disabilities and other students' support.



## Access Map

