



OSAKA KYOIKU  
UNIVERSITY

# at a Glance

---

2024



## 【 Outline 】

Osaka Kyoiku University (OKU), which was founded in May 1874 as a teacher training school, has 150 years history and tradition. The current number of undergraduate and graduate students totals approximately 4300, with another 4600 students matriculated in affiliated schools. Among Japanese universities, OKU is one of the leading producers of qualified teachers and large-scale colleges of education.

The main campus of OKU was established in the Kongo Ikoma Kisen National Park, in Kashiwara City, Osaka. This campus is approximately 670,000 square meters in area. In addition, OKU also has a campus in Tennoji.

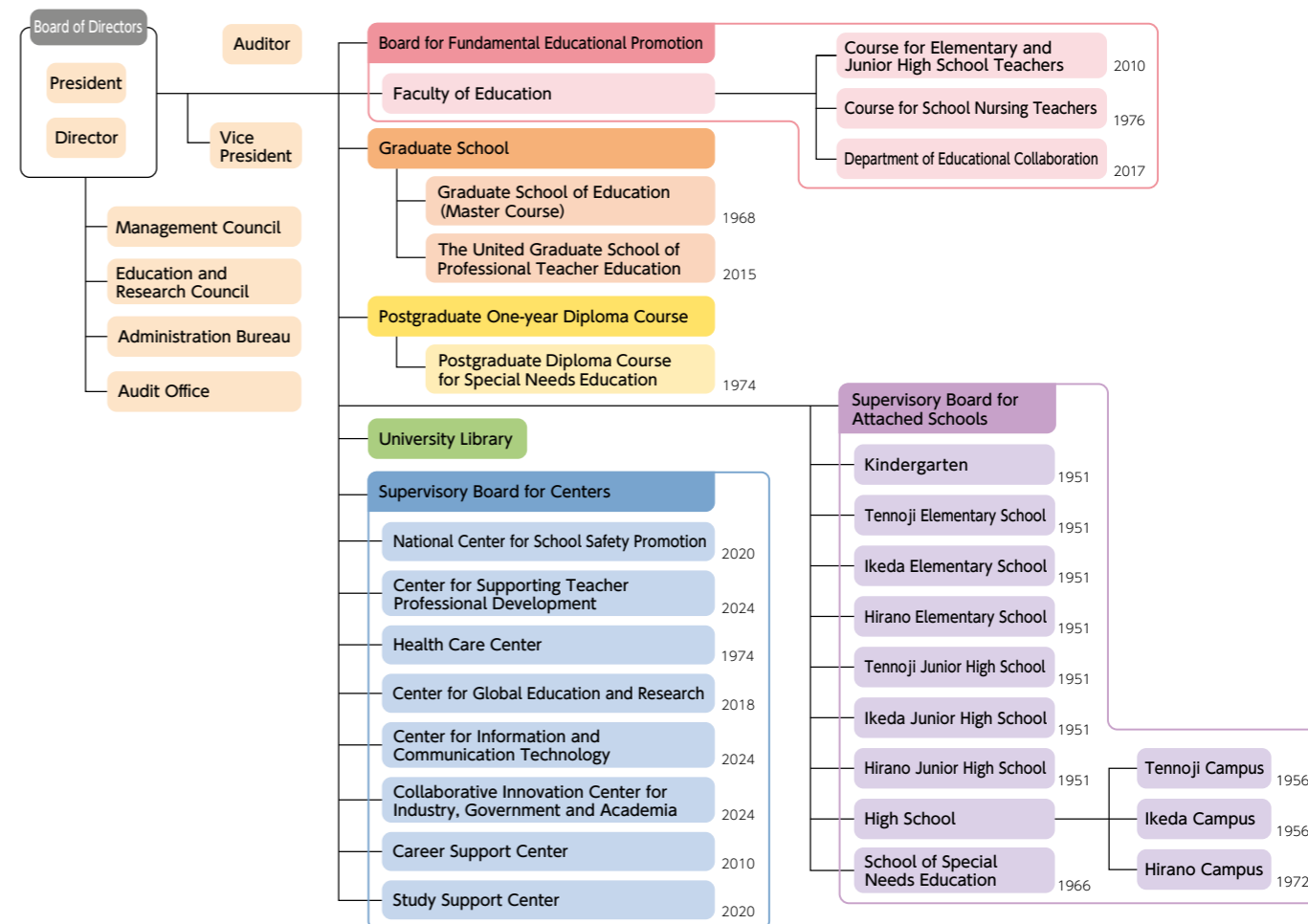
The university's programs are designed to meet the high educational standards of a comprehensive teacher training university, which in the case of OKU is made up of 11 affiliated schools and 8 educational centers.

## 【 Contents 】

Outline .....	2
Organization / Number of Personnel .....	3
Number of Students .....	4 - 6
Career Path for Students / University Library .....	7
International Exchange .....	8 - 9
Budget / Land and Building / External Grants .....	10
Affiliated Schools .....	11
Campus Map .....	12 - 13
Center Introduction .....	14
Access Map .....	15

## Organization

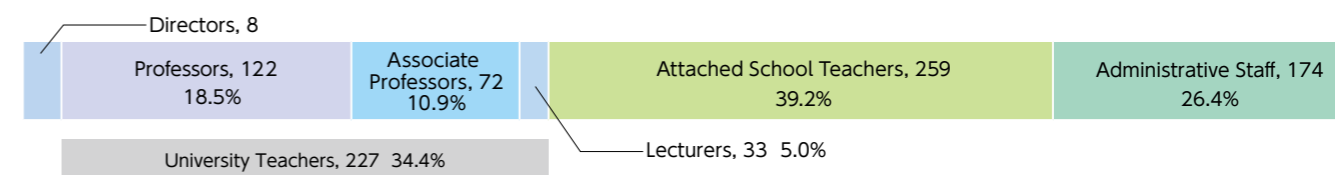
Year of establishment appears on the right



## Number of Personnel

Total number of the personnel : 668(Directors are not included.)

(May 1, 2024)





## Number of Students

(May 1, 2024)

Course		Fixed Number for Admission	Capacity	Number of Students Currently Enrolled		
Faculty of Education	Early Childhood and Elementary School Education	Early Childhood	480	15		
		Elementary School Education		46		
	New Wave Education	Arts, Sciences, and Technologies of Teaching		43		
		ICT Education		16		
	Subject-Specific Education	Japanese Language Education		47		
		English Education		28		
		Social Studies Education		44		
		Mathematics Education		46		
		Science Education		53		
		Technology Education		8		
		Home Economics Education		17		
		Health and Physical Education		42		
		Music Education		22		
		Art and Calligraphy Education		25		
		Special Needs Education		47		
		Elementary School Education (5-Year Evening)		40		
		Evening (Transfer*1)		-		
	Number of Enrollment Prior to 2023	-		1,363(3)		
	Elementary School Teacher Program*2	25		340	355	
	Elementary School Education Evening Course (Transfer)	25		75	70	
	Course for School Nursing Teachers			30	120	123
	Total			575	2,315	2,451

The numbers in parentheses represent international students.  
 \*1 Accepting from FY2026  
 \*2 From FY2024 hiring freeze except for Evening Course(Transfer)

(May 1, 2024)

Course		Fixed Number for Admission	Capacity	Number of Students Currently Enrolled		
Faculty of Education	Department of Educational Collaboration	Educational Psychology Sciences	350	1,400	170(34)	
		Health and Safety Sciences			147(12)	
		Science, Mathematics and Information			Mathematics and Information Course	165(30)
					Natural Sciences Course	246(6)
		Global Education			English Communication Course	104
					Multicultural Literacy Course	223(86)
		Music and Fine Arts			Music Course	168
					Fine Art Course	43(1)
		Sports Sciences			215(3)	
		Department of Arts and Sciences*			Culture	1
	Natural Sciences				1	
Total		350	1,400	1,483(172)		

The numbers in parentheses represent international students.  
 \* From FY2017 hiring freeze



## Number of Students

(May 1, 2024)

	Course	Fixed Number for Admission	Capacity	Number of Students Currently Enrolled
Graduate School of Education	Health Sciences (Evening Course)*	—	—	2
	School of Advanced Professional Collaboration in Education	50	100	117(30)
The United Graduate School of Professional Teacher Education	School of Advanced Professional Development in Education	150	300	231(2)
<b>Total</b>		200	400	350(32)
Postgraduate Diploma Course for Special Needs Education		30	30	24

The numbers in parentheses represent international students.  
\* From FY2021 hiring freeze



## Career Path for Students

(FY2023)

Occupation	Courses for Elementary and Junior High School Teachers · Course for School Nursing Teachers		Department of Educational Collaboration		Course for Elementary School Teachers		Elementary School Education Evening Course(5years)		Graduate School of Education		The United Graduate School of Professional Teacher Education	
	Number	%	Number	%	Number	%	Number	%	Number	%	Number	%
Teachers	280	62.2%	62	18.5%	73	62.4%	30	54.5%	5	13.9%	94	94.9%
Private Companies	91	20.2%	165	49.2%	31	26.5%	14	25.4%	21	58.3%	1	1.0%
Public Services	23	5.1%	33	9.9%	9	7.7%	8	14.5%	3	8.3%	0	0.0%
Higher Education	46	10.2%	59	17.6%	3	2.6%	2	3.6%	1	2.8%	1	1.0%
Others	10	2.2%	16	4.8%	1	0.9%	1	1.8%	6	16.7%	3	3.0%
<b>Total</b>	<b>450</b>	<b>100%</b>	<b>335</b>	<b>100%</b>	<b>117</b>	<b>100%</b>	<b>55</b>	<b>100%</b>	<b>36</b>	<b>100%</b>	<b>99</b>	<b>100%</b>

Percentages are rounded to the nearest whole number and may not total 100.



## University Library

Number of Books

Number of Visitors

Total Circulations

(FY2023)

	Books	Periodicals (Japanese)	Periodicals (Foreign Languages)	Audiovisual Materials	Number of Visitors			Total Circulations		
					Students	Academic and Non-academic staff	Others	Students	Academic and Non-academic staff	Others
Main Library	864,842	14,232	3,317	14,445	110,400	3,985	2,595	27,787	4,179	22
Branch	85,613	1,141	110	590	9,950	1,149	4,313	3,625	874	574
<b>Total</b>	<b>950,455</b>	<b>15,373</b>	<b>3,427</b>	<b>15,035</b>	<b>120,350</b>	<b>5,134</b>	<b>6,908</b>	<b>31,412</b>	<b>5,053</b>	<b>596</b>

3,791 e-journals / 30,971 e-books / 6 databases



# International Exchange

Number of International Students

Year	Number of Countries and Areas	Number of Students
2020	25	202
2021	10	209
2022	20	228
2023	24	253
2024	21	239

Number of OKU Students Studying Abroad at a Partner University

Region	Country / Area	University	Number of Students
Asia	Korea	Ewha Womans University	1
Europe	Croatia	Faculty of Humanities and Social Sciences University of Zagreb	1
	Switzerland	Zurich University of Teacher Education	1
	Sweden	Linnaeus University	2
	Finland	Abo Akademi University	2
		Western Carolina University	1
North America	U.S.A	University of North Carolina Wilmington	2
Oceania	Australia	Griffith University	1
Total			11

Number of International Students by Country and Area

Region	Country / Area	Number of Students
Asia	China	181
	Vietnam	16
	Korea	11
	Taiwan	5
	Indonesia	1
	Malaysia	1
	Bhutan	1
	Myanmar	2
	Thailand	3
	Africa	Morocco
Nigeria		1
Namibia		1
Malawi		1

Region	Country / Area	Number of Students
Europe	Kazakhstan	1
	Ukraine	1
	Germany	3
	Poland	2
	Turkmenistan	1
	France	2
	South America	Brazil
	Chile	1
Total		239

List of Educational Institutions under Academic Exchange Agreements

Region	Country / Area	Name of University	Date of Concluding of the Agreement	Student Exchange	Academic Exchange
Asia	Indonesia	Institut Seni Indonesia Yogyakarta	September 21,2011		○
	Singapore	National Institute of Education, Nanyang Technological University	July 01,2014		○
	Thailand	Office of the Basic Education Commission, Ministry of Education	January 30,2019		○
		Chandrakasem Rajabhat University	April 28, 2023	○	○
		Chiang Mai University	August 09, 2023		○
	Korea	Kongju National University	March 08,2011	○	○
		Cheongju National University of Education	October 22,2010	○	○
		Sungshin Women's University	July 04,2018		○
		Jeonju National University of Education	October 22,2010	○	○
		Seoul National University of Education	July 20,2005	○	○
		Daegu National University of Education	October 25,2017	○	○
		Daegu Haany University	May 24,2006	○	○
		Chungnam National University	March 21,2013	○	○
		Busan National University of Education	June 15,2011	○	○
		Ewha Womans University	February 16,2001	○	○

Region	Country / Area	Name of University	Date of Concluding of the Agreement	Student Exchange	Academic Exchange	
Asia	Taiwan	National Dong Hwa University	May 15,2018		○	
		National Taichung University of Education	April 22,2010	○	○	
		National Taipei University of Education	February 21,2008	○	○	
		University of Taipei	December 26,2022	○	○	
		National Taiwan Normal University	May 21,2010	○	○	
		National Kaoshung Normal University	April 20,2010	○	○	
			June 04,2015		○	
			March 17,2022	○		
			February 28,2019		○	
			March 18,2008		○	
	China	Weifang Education Bureau	February 28,2019		○	
		Yunnan University	March 18,2008		○	
		Yunnan Normal University	July 20,2006		○	
		East China Normal Education	April 13,2006		○	
		Hebei Normal University	December 13,2005	○	○	
		Shandong University of Arts	September 07,2020	○	○	
		Xi'an Institute of Technology	October 31,2007		○	
		National Institute of Education Sciences	November 19,2015		○	
		Tianjin University	July 18,2018	○	○	
		Tongji University	March 08,2002	○	○	
	Vietnam	Northeast Normal University	July 16,1996	○	○	
		Beijing Normal University	July 17,1996		○	
		The Education University of Hong Kong	October 30,2008	○	○	
		Hanoi University	January 10,2014	○	○	
		Hanoi National University of Education	August 14,2020	○	○	
		Ho Chi Minh City University of Education	February 26,2014	○	○	
		University of Chester	November 15,2004		○	
	Europe	Kazakhstan	Abai Kazakh National Pedagogical University	September 01,2019		○
		Kyrgyz	Bishkek Humanities University	November 12,2015	○	○
		Croatia	Faculty of Humanities and Social Sciences University of Zagreb	March 18,2022	○	○
Switzerland		University of Geneva	May 16,2017	○	○	
		Zurich University of Teacher Education	April 01,2019	○	○	
Sweden		Linnaeus University	December 29,2001	○	○	
			Friedrich-Alexander-University Erlangen-Nuremberg	June 01,2001	○	○
			Faculty of Linguistic, Literary and Media Studies, University of Trier	September 01,2013	○	○
			The Faculty of Education of the Universität Leipzig	March 12,2013	○	○
Finland		Åbo Akademi University	August 30,2010	○	○	
France	Jean Moulin-Lyon 3 University	June 01,2004	○	○		
Oceania	Australia	Institute of Continuing & TESOL Education, The University of Queensland (ICTE-UQ)	February 17,2015		○	
		Griffith University	November 05,2002	○	○	
Middle East	Afghanistan	Teacher Training Department,Ministry of Education	November 01,2006		○	
		Martyr Professor Burhanudin Rabani Education and Training University	November 01,2006		○	
North America	U.S.A	The University of Arizona	June 25,2018		○	
		Western Carolina University	October 19,2020	○	○	
		University of North Carolina Wilmington	October 07,2020	○	○	
	Canada	University of Victoria	February 06,2013		○	



## Income and Disbursement / Land and Building / External Grants

### Income and Disbursement in FY2023

#### Income

Classification	Amount of Money
Subsidies for Operating Expenses	6,357
Subsidies for Supplies and Equipment	668
Subsidies	729
Subsidy from National Institution for Academic Degrees and Quality Enhancement of Higher Education	14
Tuition and Examination Fees	2,481
Withdrawal of Income from Asset Disposal	606
Miscellaneous Income	102
Cooperative Research and Contributions	614
Reversal of Reserve for Purpose	105
<b>Total</b>	<b>11,675</b>

(unit: million yen)

#### Disbursement

Classification	Amount of Money
Education and Research Expenses	9,229
Supplies and Equipment Expenses	682
Subsidies	543
Business Expenses of Cooperative Research and Contributions	324
<b>Total</b>	<b>10,778</b>

(unit: million yen)

### Grants from Outside the University

Classification	FY2021		FY2022		FY2023	
	Number of Acceptance	Amount of Money	Number of Acceptance	Amount of Money	Number of Acceptance	Amount of Money
Endowments	241	190,946	305	218,847	172	238,901
Requested Research Grant by Private Sector	4	3,100	1	130	3	2,940
Join Research Grant	10	36,926	13	41,238	13	42,704
Requested Projects Grant	11	21,397	9	17,278	16	48,707
Grant-in-Aid for Scientific Research	215	127,488	216	113,650	202	107,318
<b>Total</b>	<b>481</b>	<b>379,857</b>	<b>544</b>	<b>391,143</b>	<b>404</b>	<b>440,570</b>

(unit: thousand yen)

### Land and Building

(May 1, 2024)

Campus Bureau	Land(m <sup>2</sup> )	Building(m <sup>2</sup> )
Kashiwara Campus	666,053	79,660
Tennoji Campus	49,648	20,654
Affiliated School Campus (Total)	160,623	66,271
Mountain Lodge	5,652	387
Others	14,020	7,918
<b>Total</b>	<b>895,996</b>	<b>174,890</b>



## Affiliated Schools

Osaka Kyoiku University reformed the governance system and set up Supervisory Board as an organization to combine between the university and its attached schools in 2020. Nine attached schools including three elementary schools, three junior high schools, a multi-campus senior high school located in three different areas, a school of special needs education and a kindergarten are supervised by this board.

This board works on strengthening cooperation between the university and its attached schools as well as promoting their secure management, guidance, education, researches and school safety. Our attached schools make outstanding contributions to educational researches of the university and provide undergraduate students with the practicum teaching

experience. They also conduct their joint research in each area. They cooperate with each other and are closely connected through higher grade schools accepting students from lower grade schools.

< Tennoji area >

Literacy education to harmonize human being and science

< Ikeda area >

Fostering learners' competency to create a global society collaboratively

< Hirano area >

Curriculum implementation and educational evaluation aimed at developing each child as a creator of a new society ~

Through "involvement" and "creation"~



### — Tennoji area —

#### Tennoji Elementary School

1-2-45 Matsuzakicho, Abeno, Osaka 545-0053, Japan  
tel: +81-(0)6-6621-0123

Current Enrollment Number 627

Number of Classes 18

Capacity 630

#### Tennoji Junior High School

4-88 Minami Kawahoricho, Tennoji, Osaka 543-0054, Japan  
tel: +81-(0)6-6775-6052

Current Enrollment Number 430

Number of Classes 12

Capacity 432

#### High School Tennoji Campus

4-88 Minami Kawahoricho, Tennoji, Osaka 543-0054, Japan  
tel: +81-(0)6-6775-6053

Current Enrollment Number 467

Number of Classes 12

Capacity 480



### — Ikeda area —

#### Ikeda Elementary School

1-5-1 Midorigaoka, Ikeda, Osaka 563-0026, Japan  
tel: +81-(0)72-761-3591

Current Enrollment Number 599

Number of Classes 18

Capacity 630

#### Ikeda Junior High School

1-5-1 Midorigaoka, Ikeda, Osaka 563-0026, Japan  
tel: +81-(0)72-761-8690

Current Enrollment Number 432

Number of Classes 12

Capacity 432

#### High School Ikeda Campus

1-5-1 Midorigaoka, Ikeda, Osaka 563-0026, Japan  
tel: +81-(0)72-761-8473

Current Enrollment Number 469

Number of Classes 12

Capacity 480



### — Hirano area —

#### Kindergarten

2-1-79 Nagaremachi, Hirano, Osaka 547-0032, Japan  
tel: +81-(0)6-6709-9400

Current Enrollment Number 133

Number of Classes 6

Capacity 150

#### Hirano Elementary School

1-6-41 Nagaremachi, Hirano, Osaka 547-0032, Japan  
tel: +81-(0)6-6709-1230

Current Enrollment Number 624

Number of Classes 18

Capacity 630

#### Hirano Junior High School

2-1-24 Nagaremachi, Hirano, Osaka 547-0032, Japan  
tel: +81-(0)6-6709-9600

Current Enrollment Number 321

Number of Classes 9

Capacity 324

#### High School Hirano Campus

2-1-24 Nagaremachi, Hirano, Osaka 547-0032, Japan  
tel: +81-(0)6-6707-5800

Current Enrollment Number 347

Number of Classes 9

Capacity 360

#### School of Special Needs Education

4-8-71 Kire, Hirano, Osaka 547-0027, Japan  
tel: +81-(0)6-6708-2580

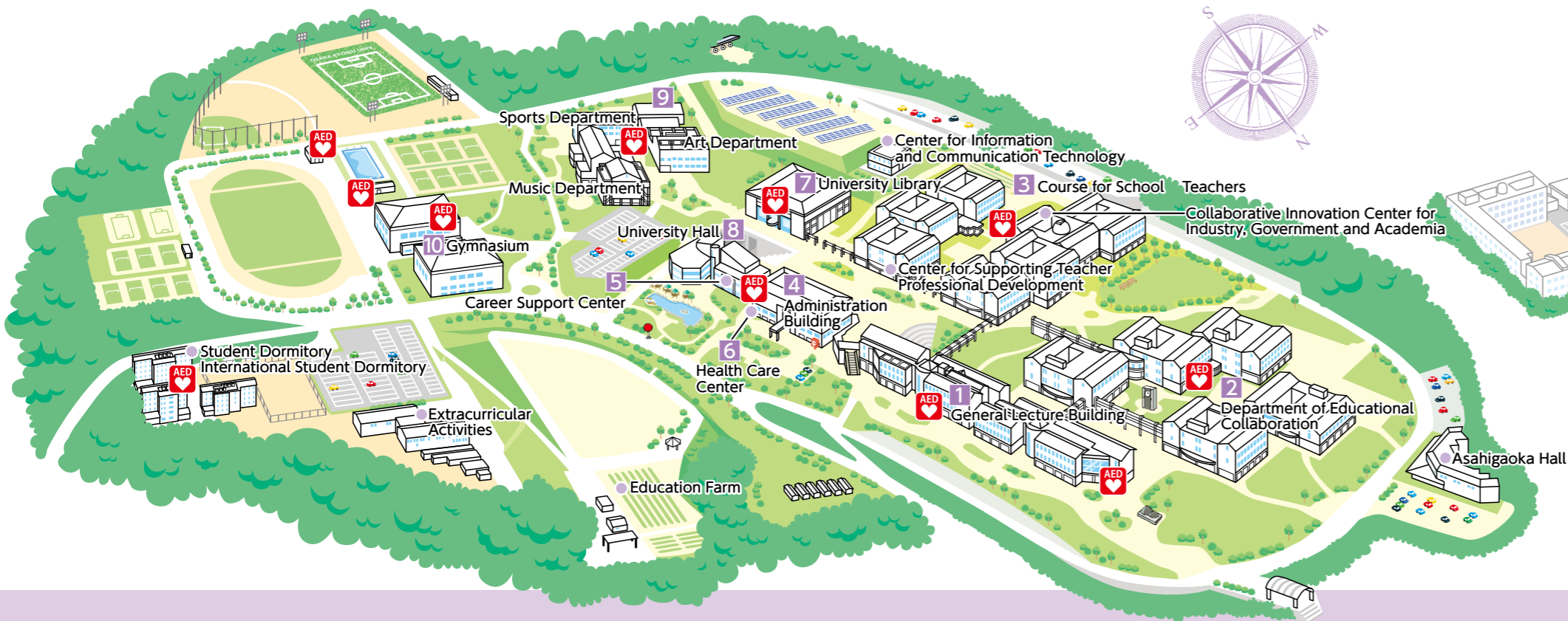
Current Enrollment Number 58

Number of Classes 9

Capacity 60

(May 1, 2024)

# Kashiwara Campus



1 General Lecture Building



6 Health Care Center



2 Department of Educational Collaboration



7 University Library



3 Course for School Teachers



8 University Hall



4 Administration Building



9 Art・Music・Sports Department



5 Career Support Center

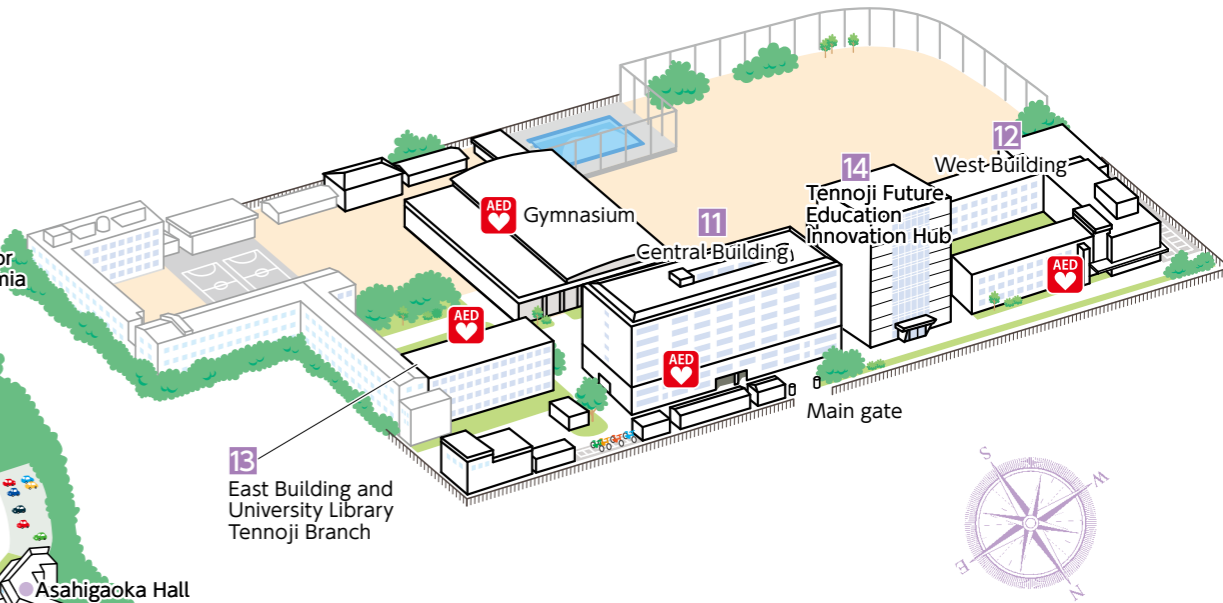


10 Gymnasium



**Other Facilities** Center for Information and Communication Technology / Center for Supporting Teacher Professional Development / Collaborative Innovation Center for Industry, Government and Academia / Center for Global Education and Research / Study Support Center / Student Dormitory / International Student Dormitory / Extracurricular Activities / Education Farm / Asahigaoka Hall

# Tennoji Campus



11 Central Building



13 East Building and University Library Tennoji Branch



12 West Building



14 Tennoji Future Education Innovation Hub





## Center Introduction



### National Center for School Safety Promotion

23 pupils and teachers were murdered or injured on June 8, 2001 in Ikeda Elementary School attached to Osaka Kyoiku University. Long term treatment has therefore been vital for emotionally damaged pupils, their parents, and teachers.

The center supports special methods to handle crisis in schools like the case above, carries out research on risk management in schools, and it is accessible to all researchers in this field.



### Center for Supporting Teacher Professional Development

We guide and support students who are aiming to obtain a teaching license in their practical activities, such as reflective activities towards teaching and teaching practicums. Furthermore, we plan and review classes related to diversity education in the undergraduate program to contribute to the cultivation of teachers capable of promoting diversity education in schools. Moreover, to enhance the professional development of in-service teachers, we collaborate with other universities and boards of education to develop e-learning content for teacher training.



### Health Care Center

Health Care Center provides various health-related information. The center places special emphasis on offering assistance that enhances the student's as well as faculty's health.



### Center for Global Education and Research

While the center provides services with the objectives of expanding teacher education by cooperating with other educational/research institutes both domestic and overseas, it also aims to advance human resource development, meeting a demand of globalized society.



### Center for Information and Communication Technology

The objective of the Center for Information and Communication Technology is to contribute to the development of educational research by promoting the computerization and smoothly operating the information system as the on-campus common-use facility.



### Collaborative Innovation Center for Industry, Government and Academia

This center aims to produce "innovation for education" by integrating resources from universities, industries, and government agencies. Additionally, the center manages scientific equipment at Osaka-Kyoiku University, trains elementary and secondary school teachers in science and technology, and revitalizes science and technology education in schools and communities.



### Career Support Center

The objective of the Career Support Center is to support Osaka Kyoiku University students to build their career paths, choose professions, and to plan their course after graduation. The Career Support Center in collaboration with the academic advisor, gives advice and support suited for each students' aptitude and their plan after graduation.



### Study Support Center

We provide consultation to students, offer study support for students with disabilities and other students' support.



## Access Map

