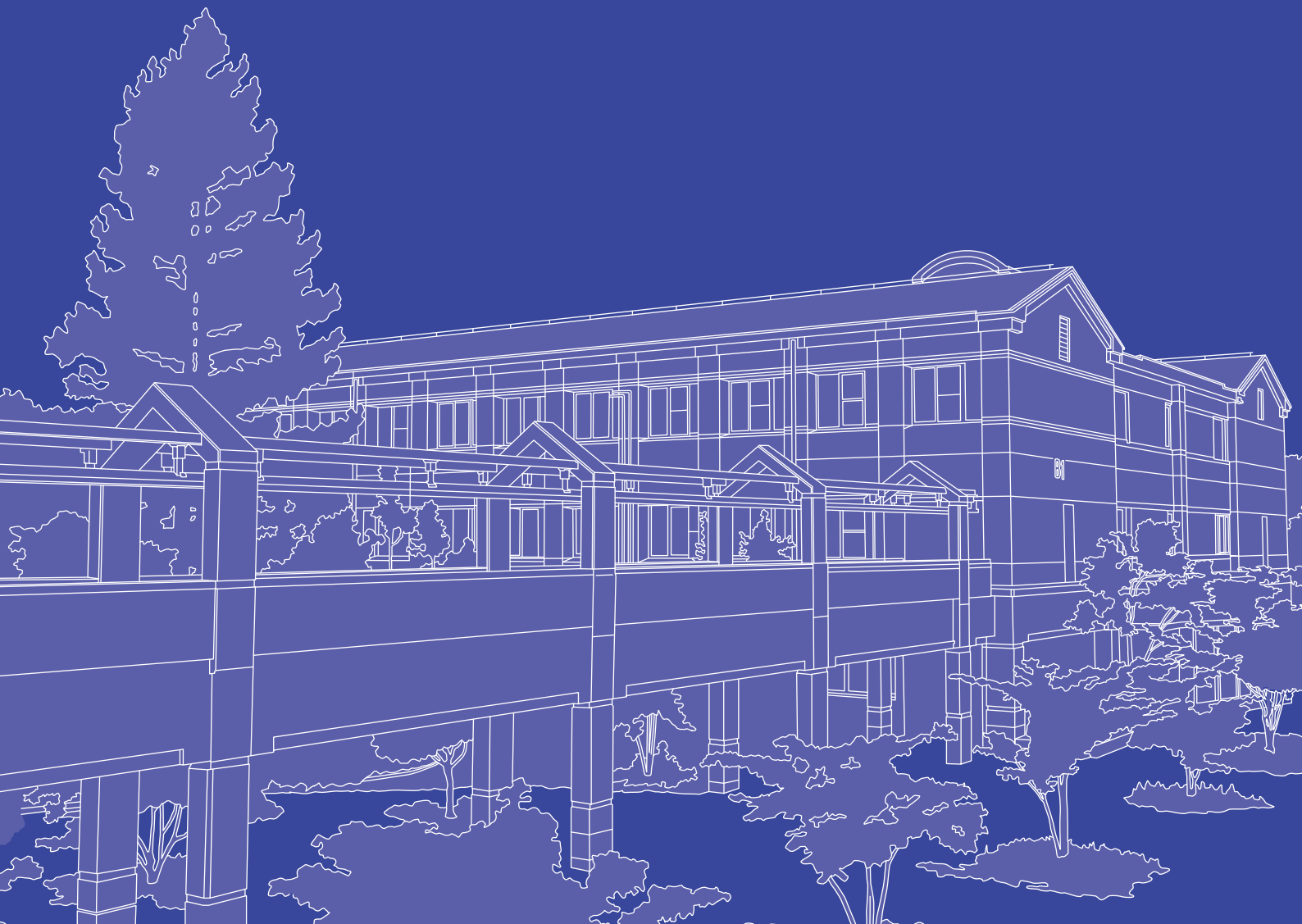




OSAKA KYOIKU
UNIVERSITY

2021 at a Glance



【 Outline 】

Osaka Kyoiku University (OKU), which was founded in May 1874 as a teacher training school, has over 140 years history and tradition. The current number of undergraduate and graduate students totals approximately 4700, with another 4800 students matriculated in affiliated schools. Among Japanese universities, OKU is a one of the leading producers of qualified teachers and a leading large-scale college of education.

The main campus of OKU was established in the Kongo Ikoma Kisen National Park, in Kashiwara City, Osaka. This campus is approximately 670,000 square meters in area. In addition, OKU also has a campus in Tennoji.

In April 2017, OKU introduced a newly established department, Department of Educational Collaboration, which nurtures human resources specialized in the field of education/learning support as well as reorganizing Courses for School Teachers. The new department aims to educate creative personnel capable of leading the development of school education and its related fields.

In April 2019, OKU had a major expansion of the United Graduate School of Professional Teacher Education in cooperation with Kansai University and Kindai University, and reorganized its Graduate School of Education (Masters Course) into 1 major 3 courses in April 2021.

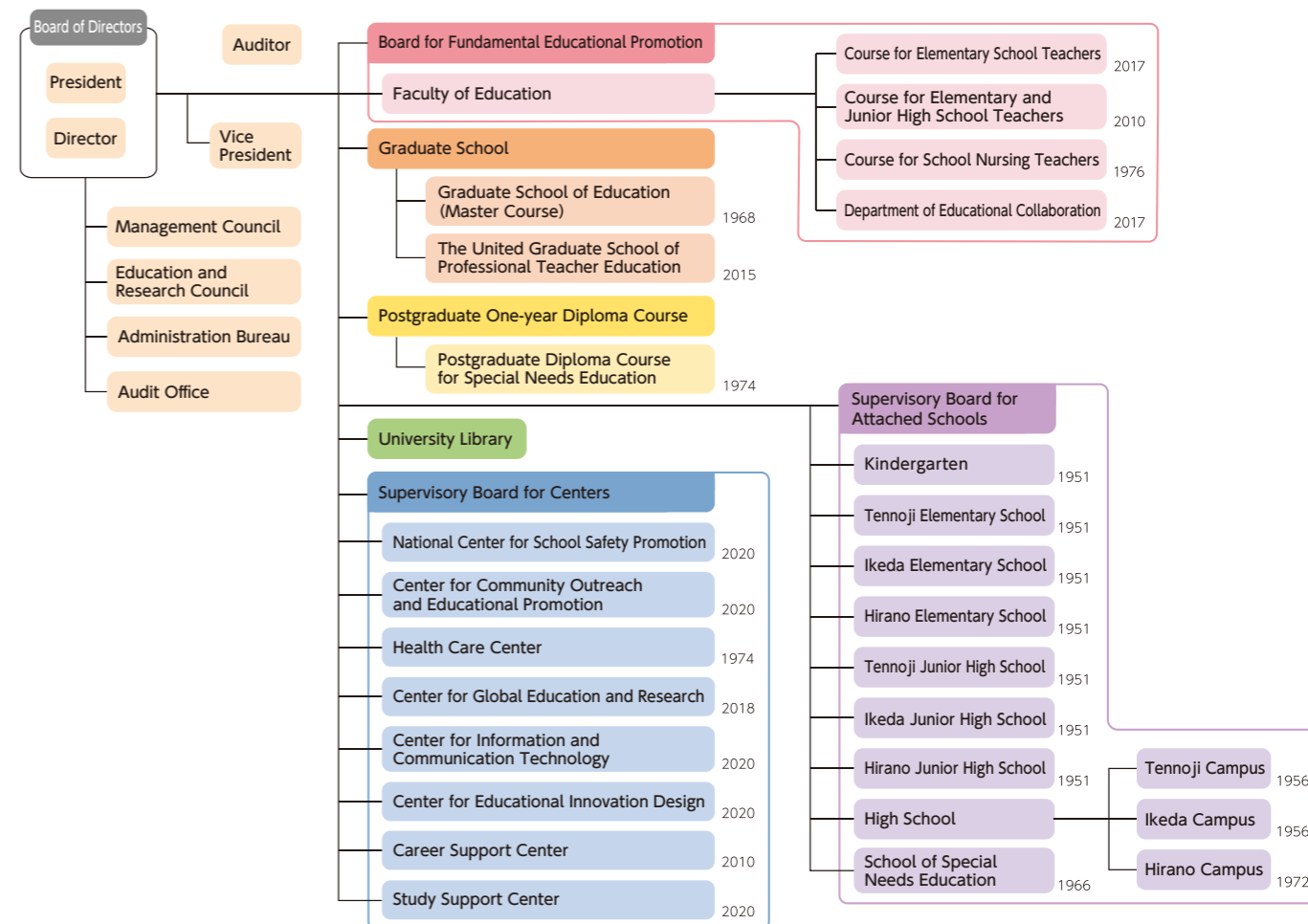
The university's programs are designed to meet the high educational standards of a comprehensive teacher training university, which in the case of OKU is made up 11 affiliated schools and 7 educational centers.

【 Contents 】

Outline	2
Organization / Number of Personnel	3
Number of Students	4 - 6
Career Path for Students / University Library	7
International Exchange	8 - 9
Budget / Land and Building / External Grants	10
Affiliated Schools	11
Campus Map	12 - 13
Center Introduction	14
Access Map	15

Organization

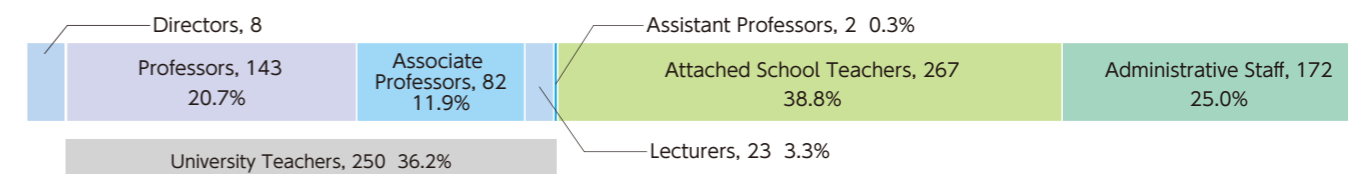
Year of establishment appears on the right



Number of Personnel

Total number of the personnel : 689(Directors are not included.)

(May 1, 2021)





Number of Students

(May 1, 2021)

Course		Fixed Number for Admission	Capacity	Number of Students Currently Enrolled				
Faculty of Education	Course for Elementary School Teachers	Early Childhood Education	15	60	69(1)			
		Elementary School Education	Daytime Course	45	180	183		
			Evening Course(5years)	40	200	205		
			Evening Course(Transfer*1)	25	75	73		
			Special Needs Education			189(6)		
	Course for Elementary and Junior High School Teachers	Primary and Secondary Education	School Education Course	420	1,680	115		
			Japanese Language Education Course			158		
			English Education Course			66(1)		
			Social Studies Education Course			156(1)		
			Mathematics Education Course			101		
			Science Education Course			147(1)		
			Home Economics Education Course			40		
			Health and Physical Education Course			122		
			Music Education Course			46		
			Art and Calligraphy Education Course			75		
			Secondary Education			Japanese Language Education Course	40	
		English Education Course				66		
		Social Studies Education Course				50(1)		
		Mathematics Education Course				97		
		Science Education Course				105		
		Technology Education Course				37		
		Home Economics Education Course				37		
		Health and Physical Education Course				44		
		Music Education Course				43		
		Art and Calligraphy Education Course				47		
		Number of Enrollment Prior to 2016				—		22
		Course for School Nursing Teachers				30	120	123
		Course for Special Needs Education Teachers*2	—			—	2	
	Course for Elementary School Teachers (5years)*2	—	—	9				
	Total	575	2,315	2,467(11)				

The numbers in parentheses represent international students.

*1 Accepting from FY2019

*2 From FY2017 hiring freeze

(May 1, 2021)

Course		Fixed Number for Admission	Capacity	Number of Students Currently Enrolled		
Faculty of Education	Department of Educational Collaboration	Educational Psychology Sciences	350	1,400	162(32)	
		Health and Safety Sciences			145(12)	
		Science, Mathematics and Information			Mathematics and Information Course	157(23)
					Natural Sciences Course	242(11)
		Global Education			English Communication Course	127(2)
					Multicultural Literacy Course	187(59)
		Music and Fine Arts			Music Course	179
					Fine Art Course	46(2)
		Sports Sciences			—	208(4)
		Department of Arts and Sciences*			Human Sciences	—
	Culture		4			
	Mathematical Sciences		7(1)			
	Natural Sciences		5(1)			
	Information Sciences		7			
	Health and Life Sciences		1			
	Sports		1			
	Music and Fine Arts		4			
	Total		350	1,400	1,488(148)	

The numbers in parentheses represent international students.

* From FY2017 hiring freeze



Number of Students

(May 1, 2021)

	Course	Fixed Number for Admission	Capacity	Number of Students Currently Enrolled
Graduate School of Education	Special Needs Education*1	—	—	1
	Social Studies Education*1	—	—	1
	Science Education*1	—	—	1
	Art Education*1	—	—	1
	International Culture Studies*2	—	12	19(11)
	Pure and Applied Sciences*2	—	16	9
	Music and Fine Arts Studies*2	—	12	14(5)
	Health Sciences (Evening Course)*2	—	21	35
	School of Advanced Professional Collaboration in Education	50	50	53(19)
The United Graduate School of Professional Teacher Education	School of Advanced Professional Development in Education	150	300	233
Total		200	411	367(35)
Postgraduate Diploma Course for Special Needs Education		30	30	28

The numbers in parentheses represent international students.
*1 From FY2019 hiring freeze *2 From FY2021 hiring freeze



Career Path for Students

(FY2020)

Occupation	Courses for School Teachers		Department of Educational Collaboration		Course for Elementary School Teachers (5years)		Graduate School of Education		The United Graduate School of Professional Teacher Education	
	Number	%	Number	%	Number	%	Number	%	Number	%
Teachers	325	64	58	16	49	64	23	32	90	93
Private Companies	95	19	181	51	13	17	32	45	4	4
Public Services	27	5	37	11	2	3	6	8	0	0
Higher Education	53	10	61	17	5	7	4	6	1	1
Others	8	2	15	4	7	9	6	8	2	2
Total	508	100	352	100	76	100	71	100	97	100



University Library

Number of Books

Number of Visitors

Total Circulations

(FY2020)

	Books	Periodicals (Japanese)	Periodicals (Foreign Languages)	Audio Visual Materials	Number of Visitors			Total Circulations		
					Students	Academic and Non-academic staff	Others	Students	Academic and Non-academic staff	Others
Main Library	851,238	14,222	3,325	18,350	34,922	3,185	132	18,439	4,397	1,098
Branch	80,491	1,119	110	1,129	5,709	308	3	3,226	552	323
Total	931,729	15,341	3,435	19,479	40,631	3,493	135	21,665	4,949	1,421

3,856 e-journals / 26,698 e-books / 7 databases



International Exchange

Number of International Students

(May 1, 2021)

Year	Number of Countries and Areas	Number of Students	Year	Number of Countries and Areas	Number of Students
2016	24	162	2019	18	178
2017	22	150	2020	25	202
2018	23	176	2021	10	209

Number of International Students by Country and Area

(May 1, 2021)

Region	Country / Area	Number of Students
Asia	China	169
	Vietnam	19
	Korea	10
	Taiwan	4
	Indonesia	1
	Thailand	1
Middle East	Iran	1
Africa	Malawi	2
Europe	Kyrgyz	1
	Bulgaria	1
Total		209

Number of OKU Students Studying Abroad at a Partner University

(FY 2020)

Region	Country / Area	University	Number of Students
—	—	—	—
Total			0

*Due to the COVID-19 pandemic worldwide, all the student exchange program was suspended in FY 2020.

List of Educational Institutions under Academic Exchange Agreements

(May 1, 2021)

Region	Country / Area	Name of University	Date of Concluding of the Agreement	Student Exchange	Academic Exchange	
Asia	Indonesia	Institut Seni Indonesia Yogyakarta	September 21, 2011		○	
	Singapore	National Institute of Education, Nanyang Technological University	July 01, 2014		○	
	Thailand	Office of the Basic Education Commission, Ministry of Education	January 30, 2019		○	
	Korea	Kongju National University		March 08, 2011	○	○
		Cheongju National University of Education		October 22, 2010	○	○
		Sungshin Women's University		July 04, 2018		○
		Jeonju National University of Education		October 22, 2010	○	○
		Seoul National University of Education		July 20, 2005	○	○
		Daegu National University of Education		October 25, 2017		○
		Daegu Haany University		May 24, 2006	○	○
		Chungnam National University		March 21, 2013	○	○
		Busan National University of Education		June 15, 2011	○	○
	Ewha Womans University		February 16, 2001	○	○	

Region	Country / Area	Name of University	Date of Concluding of the Agreement	Student Exchange	Academic Exchange	
Asia	Taiwan	National Dong Hwa University	May 15, 2018		○	
		National Taichung University of Education	April 22, 2010	○	○	
		National Taipei University of Education	February 21, 2008	○	○	
		National Taiwan Normal University	May 21, 2010	○	○	
		National Kaohsiung Normal University	April 20, 2010	○	○	
		National Pingtung University	June 04, 2015		○	
	China	Weifang Education Bureau		February 28, 2019		○
		Yunnan University		March 18, 2008		○
		Yunnan Normal University		July 20, 2006		○
		East China Normal Education		April 13, 2006		○
		Hebei Normal University		December 13, 2005	○	○
		Shandong University of Arts		September 07, 2020	○	○
		Xi'an Institute of Technology		October 31, 2007		○
		National Institute of Education Sciences		November 19, 2015		○
		Tianjin University		July 18, 2018	○	○
		Tongji University		March 08, 2002	○	○
		Northeast Normal University		July 16, 1996	○	○
		Beijing Normal University		July 17, 1996		○
		The Education University of Hong Kong		October 30, 2008	○	○
		Vietnam	Hanoi University		January 10, 2014	○
Hanoi National University of Education			August 14, 2020	○	○	
Ho Chi Minh City University of Education			February 26, 2014	○	○	
Europe	Ireland	The University of Limerick Language Centre	April 18, 2017		○	
	U.K	University of Chester	November 15, 2004		○	
		University College London	November 11, 2005		○	
	Kazakhstan	Abai Kazakh National Pedagogical University	September 01, 2019		○	
	Kyrgyz	Bishkek State University	November 12, 2015	○	○	
	Switzerland	University of Geneva	May 16, 2017	○	○	
		Zurich University of Teacher Education	April 01, 2019	○	○	
	Sweden	Linnaeus University	December 29, 2001	○	○	
		Friedrich-Alexander-University Erlangen-Nuremberg	June 01, 2001	○	○	
		Faculty of Linguistic, Literary and Media Studies, University of Trier	September 01, 2013	○	○	
	Germany	the Faculty of Education of the Universität Leipzig	May 12, 2013	○	○	
		Finland	Åbo Akademi University	August 30, 2010	○	○
	France	Jean Moulin-Lyon 3 University	June 01, 2004	○	○	
Oceania		Australia	Institute of Continuing & TESOL Education, The University of Queensland (ICTE-UQ)	February 17, 2015		○
	Griffith University		November 05, 2002	○	○	
Middle East	Afghanistan	Teacher Training Department, Ministry of Education	November 01, 2006		○	
		Martyr Professor Burhanudin Rabani Education and Training University	November 01, 2006		○	
North America	U.S.A	The University of Arizona	June 25, 2018		○	
		Western Carolina University	October 19, 2020	○	○	
		University of North Carolina Wilmington	October 07, 2020	○	○	
		Valencia College*	June 14, 2013		○	
	Canada	University of Victoria	February 06, 2013		○	

*Valencia College: tripartite partnership with National Federation of University Co-operative Associations (University Co-op).



Budget / Land and Building / External Grants

Budget in FY2020

Income

Classification	Amount of Money
Subsidies for Operating Expenses	6,153
Subsidies for Supplies and Equipment	881
Subsidies	368
Subsidy from National Institution for Academic Degrees and Quality Enhancement of Higher Education	27
Tuition and Examination Fees	2,469
Miscellaneous Income	104
Cooperative Research and Contributions	510
Reversal of Reserve for Purpose	284
Reversal of Allowance	11
Total	10,806

(unit: million yen)

Disbursement

Classification	Amount of Money
Education and Research Expenses	8,769
Supplies and Equipment Expenses	908
Subsidies	212
Business Expenses of Cooperative Research and Contributions	305
Total	10,194

(unit: million yen)

Grants from Outside the University

Classification	FY2018		FY2019		FY2020	
	Number of Acceptance	Amount of Money	Number of Acceptance	Amount of Money	Number of Acceptance	Amount of Money
Endowments	309	207,209	584	230,796	614	220,458
Requested Research Grant by Private Sector	5	3,475	8	6,978	2	1,650
Join Research Grant	6	33,288	5	37,361	5	60,674
Requested Projects Grant	19	42,510	19	37,972	10	25,897
Grant-in-Aid for Scientific Research	176	149,615	174	121,990	191	138,049
Total	515	436,097	790	435,097	822	446,728

(unit: thousand yen)

Land and Building

(May 1, 2021)

Campus Bureau	Land(m ²)	Building(m ²)
Kashiwara Campus	666,053	79,689
Tennoji Campus	51,069	17,640
Affiliated School Campus (Total)	160,623	66,247
Mountain Lodge	5,652	387
Others	17,689	7,918
Total	901,086	171,881



Affiliated Schools

Osaka Kyoiku University reformed the governance system and set up Supervisory Board as an organization to combine between the university and its attached schools in 2020. Nine attached schools including three elementary schools, three junior high schools, a multi-campus senior high school located in three different areas, a school of special needs education and a kindergarten are supervised by this board.

This board works on strengthening cooperation between the university and its attached schools as well as promoting their secure management, guidance, education, researches and school safety. Our attached schools make outstanding contributions to educational researches of the university and provide undergraduate students with the practicum teaching

experience. They also conduct their joint research in each area. They cooperate with each other and are closely connected through higher grade schools accepting students from lower grade schools.

< Tennoji area >

Literacy education to harmonize human being and science

< Ikeda area >

Fostering the qualities and abilities of learners that will connect and open up the future of the world

< Hirano area >

Consistent education among different grade level schools from life-long developmental viewpoint



— Tennoji area —

Tennoji Elementary School

1-2-45 Matsuzakicho, Abeno, Osaka 545-0053, Japan
tel: +81-(0)6-6621-0123

Current Enrollment Number 625

Number of Classes 18

Capacity 630

Tennoji Junior High School

4-88 Minami Kawahoricho, Tennoji, Osaka 543-0054, Japan
tel: +81-(0)6-6775-6052

Current Enrollment Number 432

Number of Classes 12

Capacity 432

High School Tennoji Campus

4-88 Minami Kawahoricho, Tennoji, Osaka 543-0054, Japan
tel: +81-(0)6-6775-6053

Current Enrollment Number 463

Number of Classes 12

Capacity 480



— Ikeda area —

Ikeda Elementary School

1-5-1 Midorigaoka, Ikeda, Osaka 563-0026, Japan
tel: +81-(0)72-761-3591

Current Enrollment Number 604

Number of Classes 18

Capacity 630

Ikeda Junior High School

1-5-1 Midorigaoka, Ikeda, Osaka 563-0026, Japan
tel: +81-(0)72-761-8690

Current Enrollment Number 432

Number of Classes 12

Capacity 432

High School Ikeda Campus

1-5-1 Midorigaoka, Ikeda, Osaka 563-0026, Japan
tel: +81-(0)72-761-8473

Current Enrollment Number 486

Number of Classes 12

Capacity 480



— Hirano area —

Kindergarten

2-1-79 Nagaremachi, Hirano, Osaka 547-0032, Japan
tel: +81-(0)6-6709-9400

Current Enrollment Number 145

Number of Classes 6

Capacity 150

Hirano Elementary School

1-6-41 Nagaremachi, Hirano, Osaka 547-0032, Japan
tel: +81-(0)6-6709-1230

Current Enrollment Number 625

Number of Classes 18

Capacity 630

Hirano Junior High School

2-1-24 Nagaremachi, Hirano, Osaka 547-0032, Japan
tel: +81-(0)6-6709-9600

Current Enrollment Number 323

Number of Classes 9

Capacity 324

High School Hirano Campus

2-1-24 Nagaremachi, Hirano, Osaka 547-0032, Japan
tel: +81-(0)6-6707-5800

Current Enrollment Number 358

Number of Classes 9

Capacity 360

School of Special Needs Education

4-8-71 Kire, Hirano, Osaka 547-0027, Japan
tel: +81-(0)6-6708-2580

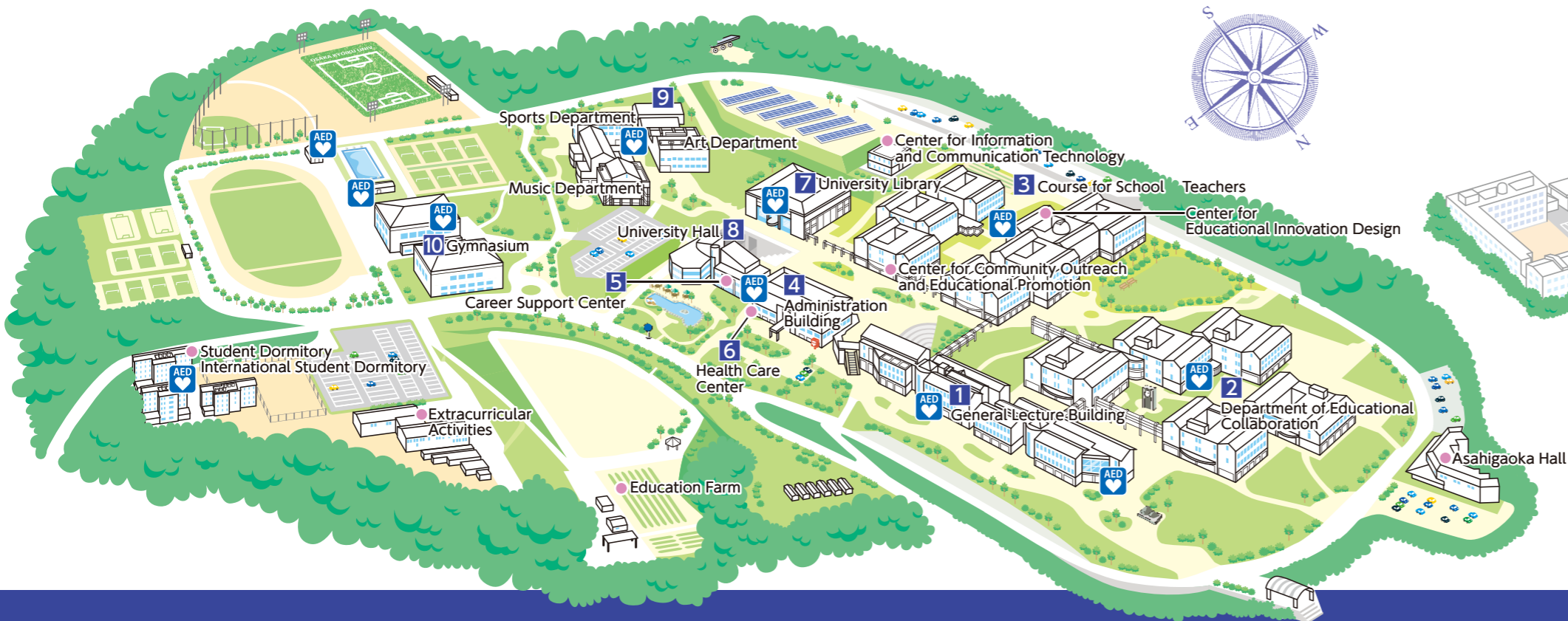
Current Enrollment Number 56

Number of Classes 9

Capacity 60

(May 1, 2021)

Kashiwara Campus



1 General Lecture Building



2 Department of Educational Collaboration



3 Course for School Teachers



4 Administration Building



5 Career Support Center



6 Health Care Center



7 University Library



8 University Hall



9 Art · Music · Sports Department



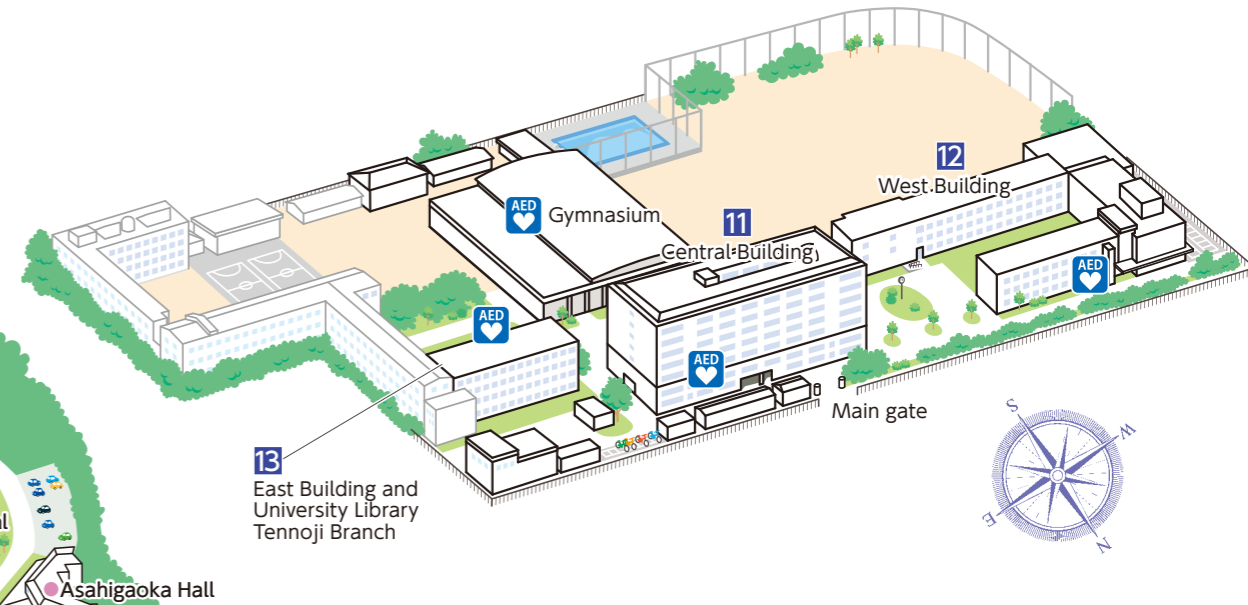
10 Gymnasium



Other Facilities

Center for Information and Communication Technology / Center for Educational Innovation Design / Center for Community Outreach and Educational Promotion / Center for Global Education and Research / Study Support Center / Student Dormitory / International Student Dormitory / Extracurricular Activities / Education Farm / Asahigaoka Hall

Tennoji Campus



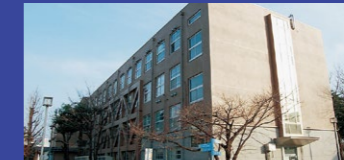
11 Central Building



12 West Building



13 East Building and University Library Tennoji Branch





Center Introduction



National Center for School Safety Promotion

23 pupils and teachers were murdered or injured on June 8, 2001 in Ikeda Elementary School attached to Osaka Kyoiku University. Long term treatment has therefore been vital for emotionally damaged pupils, their parents, and teachers.

The center supports special methods to handle crisis in schools like the case above, carries out research on risk management in schools, and it is accessible to all researchers in this field.



Center for Community Outreach and Educational Promotion

With the awareness of global issues, the center attempts to establish a borderless relationship between the university and the region. Research is conducted here on school education today and lifelong learning issues in the community, and helps to enrich and develop the teacher training and in-service training. Principles of social justice, human rights, collective responsibility and respect for diversities are central to our work.



Health Care Center

Health Care Center provides various health-related information. The center places special emphasis on offering assistance that enhances the student's as well as faculty's health.



Center for Global Education and Research

While the center provides services with the objectives of expanding teacher education by cooperating with other educational/research institutes both domestic and overseas, it also aims to advance human resource development, meeting a demand of globalized society.



Center for Information and Communication Technology

The objective of the Center for Information and Communication Technology is to contribute to the development of educational research by promoting the computerization and smoothly operating the information system as the on-campus common-use facility.



Center for Educational Innovation Design

Its aim is to research, develop, and practice a new, unprecedented, future-oriented education based on science and technology with ICT towards Society 5.0 through collaborations with institutions both within and outside the university on School Education to Higher Education.



Career Support Center

The objective of the Career Support Center is to support Osaka Kyoiku University students to build their career paths, choose professions, and to plan their course after graduation. The Career Support Center in collaboration with the academic advisor, gives advice and support suited for each students' aptitude and their plan after graduation.

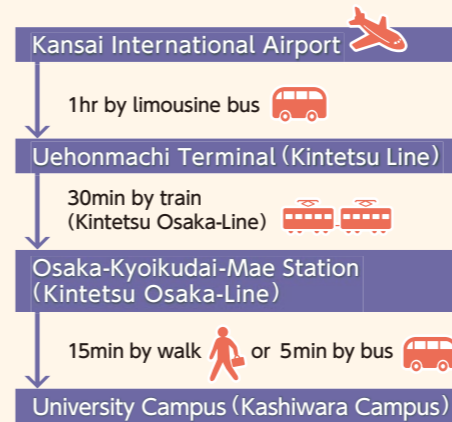


Study Support Center

We provide consultation to students, offer study support for students with disabilities and other students' support.



Access Map



Osaka Kyoiku University
Public Relations Office

4-698-1 Asahigaoka, Kashiwara,
Osaka 582-8582, Japan
E-mail : kouhou@bur.osaka-kyoiku.ac.jp
TEL : + 81-(0)72-978-3344

URL <https://osaka-kyoiku.ac.jp/en/>